

Isuzu Motors America, LLC Engine Destruction Record



Form ID: CMP-30500-03

This record must be completed by the Isuzu Distributor/Dealer/OEM Customer for every destruction of non-current EPA emissions tier engines as per 40 CFR 89.1003 (b) (7) or 40 CFR 1068.240. Information collected will be utilized for EPA reporting purposes.

Equipment Manufacturer Name		Engine Destruction Date	
Type of Equipment		Photo documentation confirming replaced engine destruction must be attached. See instructions below.	
Equipment Model Name		Replacement (New) Engine Model	
Equipment Serial Number		Replacement (New) Engine Serial Number	
Equipment Production Year		Replacement Date	
Replaced (Core) Engine Make/Model		_____ Signature DATE : MM-DD-YY	
Replaced (Core) Engine Serial Number		_____ Print Name	
This section to be completed by ISZA only.	Date Received	_____ Signature DATE : MM-DD-YY	
		_____ Print Name	

Engine Core Destruction Instructions:

Per 40 CFR 1068.240, ISZA or its designated facility must take possession of replaced non-current EPA tier engines or obtain confirmation of destruction. ISZA policy recommends the return of the unit unless this option is not available; ISZA reserves the right in specific cases to dictate the disposition of the engine.

Destruction:

1. Destruction can be conducted by distributor or customer.
2. Permanently destroying the crankshaft and destruction of the main journal (crankshaft rests on) in the block is the only acceptable form of destruction per Isuzu policy.
3. Include photos of the destroyed unit. Photos should include serial number view with damage to the block, crankshaft destruction & the destruction of main journal. (up to 4 photos)

Non-Isuzu Destruction:

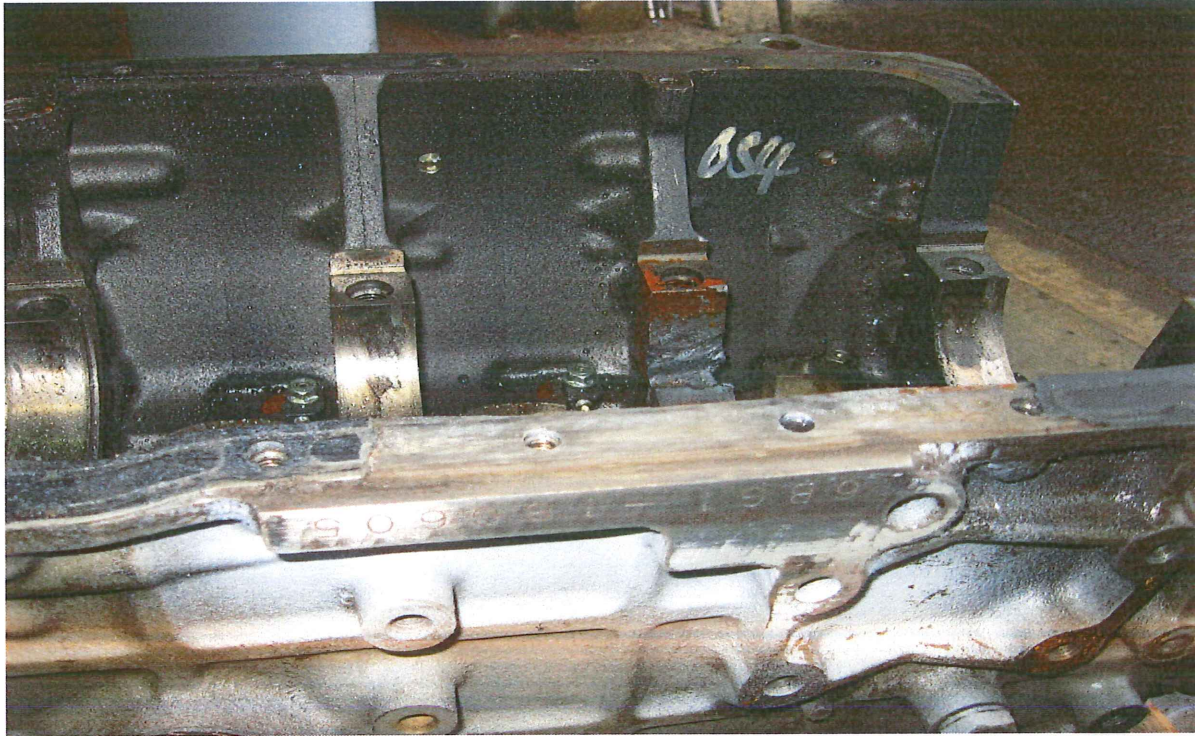
1. Follow procedures noted above in "Destruction" section.
2. Remove the engine emission label and send to M&L Engine, LLC:

M&L Engine, LLC
Attn: Sales Department
2845 Hwy 311
Schriever, LA 70395

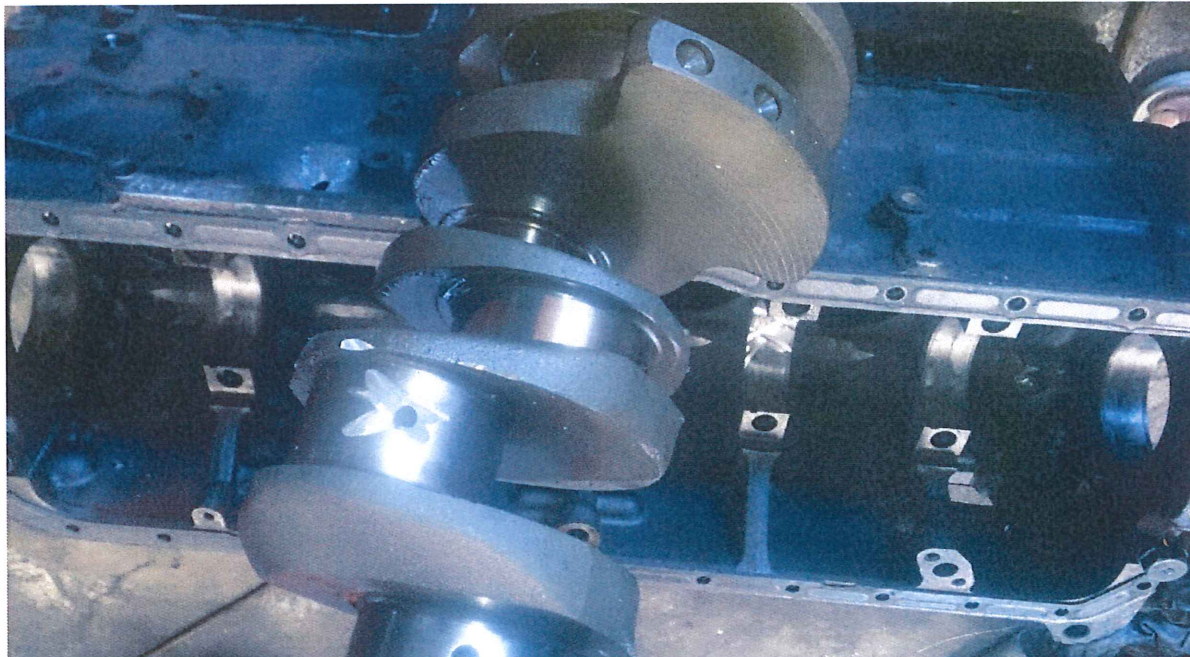
Photo Examples (samples)

Photos are required when a unit is destroyed. Photos should include serial number view with damage to the main journals of the block. The crankshaft should be removed and destroyed. (up to 4 photos)

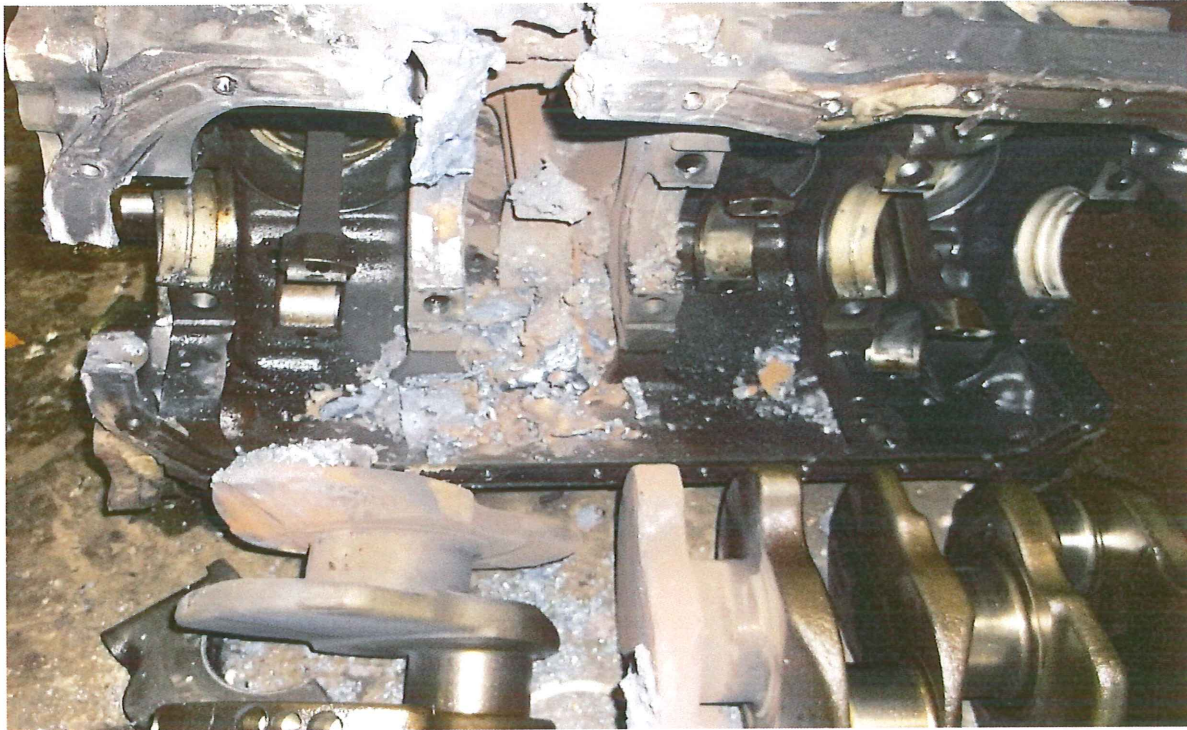
Below is a photo capturing the main journal damage inclusive of the engine serial number.



Below is another example depicting main journal damage, crankshaft damage and engine serial number in a single photo.



Below is a supporting photo depicting crankshaft destruction.



Below is a photo capturing damage to the main journal and crankshaft inclusive of the engine serial number.

